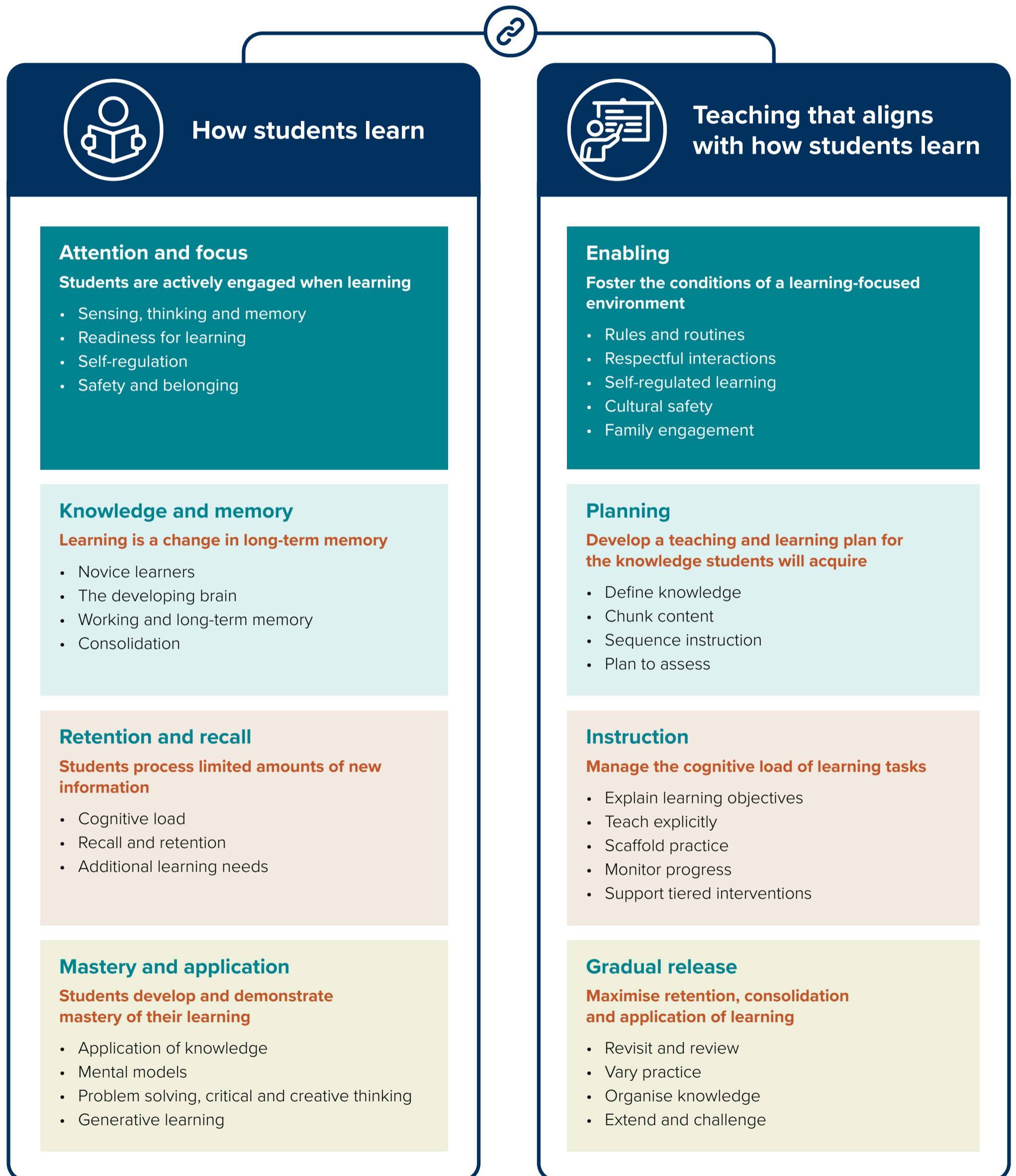


Teaching for how students learn: A model of learning and teaching

Teaching practices that are aligned with how students learn are the most effective in improving education outcomes for all. There is strong evidence about the processes that occur during learning. These processes explain why some teaching practices are more effective than others. AERO has developed a model that identifies the most effective and efficient teaching practices aligned with how students learn.



This model is underpinned by evidence on how students learn, to support teachers' practice of [Australian Professional Standards for Teachers: 1.2 Understand how students learn](#). For more information, including the evidence underpinning this model, read [How students learn best](#). For background explanation on this model, visit <https://www.edresearch.edu.au/model-learning-teaching>



